

IQH3B

IQ 3U Modular Enclosure

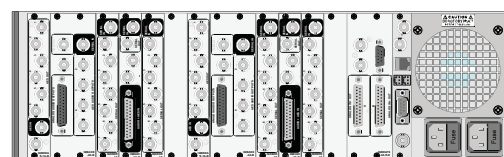
IQH3B enclosures offer industry leading, high-density delivery of modular solutions. The 3U rack unit accepts up to 16 modules, and has dual redundant PSUs and cooling fans. Analog reference signals can be distributed through the enclosures via 2 connections that can be independently selected by the installed modules. RollCall control and monitoring is included as standard using a Gateway control card that has it's own module style rear connector, thus providing a future proof upgrade path as communication standards evolve. Full SNMP control and monitoring functionality is also available over Ethernet.



Features

- 16 single or 8 double width modules (or any combination)
- Integrated web browser based RollCall configuration and control
- SNMP Control and Monitoring of ALL RollCall enabled IQ modules as standard
- Dual redundant network architecture over Ethernet and RollNet enables mission critical control applications to function even if a complete network failure occurs
- Plug-in gateway communications card to enable RollCall via RollNet, RS232/485/422 and RollCall over TCP/IP control, with support for upgradeable connectivity to handle future communication standards
- 2 x analog reference signal distribution for dual standard (Bi-Level or Tri-Level), dual video standard (SD or HD), and reference redundancy applications
- Hot swappable redundant power supplies with PSU status reporting through GPIs on the Gateway control card rear panel
- Optimum use of rack space – frames do not require any additional ventilation spacing
- Dual redundant in-service removable fan unit
- Variable fan speed, dependent upon load and ambient temperature

Order codes



IQH3B-S-0
Enclosure with Single PSU and Ethernet/SNMP Compatible RollCall Gateway Card. 16 module slots.

IQH3B-S-P
Enclosure with Dual Redundant PSU and Ethernet/SNMP Compatible RollCall Gateway Card. 16 module slots.

Accessory
IQH3PSU
Single PSU as cold spare or upgrade to Dual PSU configuration.

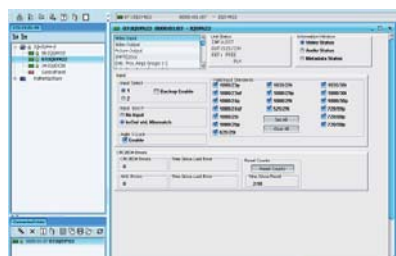
Accessory
IQH3B-FAN
Dual Fan unit for use as cold spare or replacement

Accessory
IQH3B-S-GATEW
Ethernet/SNMP compatible RollCall Gateway card for IQH3B enclosures.

Note: Although IQ modules are interchangeable between enclosures, their rear panels are enclosure specific. Code 'A or B' order codes may be used when installing modules in the IQH3B enclosure. Code 'A' order codes must be used when installing modules in the IQH3A enclosures.



IQH3B Http based frame status overview



IQH3B Web browser based Java RollCall control panel

IQH3B

IQ 3U Modular Enclosure

Technical Specification

Inputs, Outputs and Controls

Inputs/Outputs

RollCall remote control	BNC connector
RS422/485/232 remote control	9-pin D-type connector
RollCall/SNMP over TCP/IP	10/100 baseT Ethernet

Preset Controls

Unit address code set switches	2 Hex switches 0 to F
Communications mode switch	Select RS232, RS485 or RS422 interface

Additional Controls via RollCall Remote Control System

Full Control via web browser based Java RollCall control panel (available from chassis), any hardware RollCall control surface or standard RollCall Control Panel PC Application.

Specifications

Module complement	8 double width or 16 single width (or combinations of both) fitted vertically
Module card dimensions	100mm wide, 340mm long
Module rear panel dimensions	129mm high, 40.4mm (double width) 20mm (single width) wide

Power

Input voltage range	100-250 V 50/60 Hz
Input connector	IEC320 Fused 4 A(T)
Standby switch	Behind drop-down front panel
Power consumption	300 VA maximum
Modules power dissipation	210 W maximum
Output	+7.5 V and -7.5 V ±5%

Note that all modules have built-in power supply fuses.

CE Performance Information

Environment Commercial and light industrial E2 immunity, controlled EMC E4 emissions

Peak mains inrush current following a 5 second mains interruption 10A

Reference

Analog Reference	2 x Analog Reference inputs Black (HD tri-level and SD bi-level) and Black Burst (SD bi-level) SD bi-level – RS170A HD Tri-level – SMPTE 240M, 274M and 296M
Connector / Format	BNC/75 ohm panel jack on standard IQ connector panel
Analog Reference Return Loss	SD bi-level > 40 dB to 5.5 MHz HD tri-level > 35 dB to 30 MHz

Mechanical

Temperature range	0 to 45° C operating, -20 to +85° storage. A temperature and load sensitive cooling fan is fitted
Humidity range	10 to 85% (non condensing)
Case type	3U rack mounting aluminum case
Dimensions	483mm (445mm behind rack location bracket) x 490mm x 135mm (w, d, h)
Weight	Approximately 8.25 kg without modules. Approximately 15 kg fully populated

IQH3A & IQH3B Feature Comparison Table:

Feature	IQH3A	IQH3B
16 module capacity	✓	✓
Hot swappable modules	✓	✓
Dual PSUs	✓	✓
Dual Cooling Fans		✓
Internal reference distribution		✓
Integrated control browser	✓	✓
Hot swappable Gateway Card	✓	✓
Full enclosure monitoring	✓	✓
Module Power capacity	141W	210W

Note:

Please refer to the IQH3B and respective IQ module Operators Manuals to determine the module power loading limits for your required configuration.

Company policy is one of continuous product improvement. Specifications are therefore provisional and subject to change without notice. All other trademarks mentioned herein are duly acknowledged.

Shoebox Control Panel

1RU size, but only one third depth for control desk mounting of active front panel.

- Remote mounted front panel for RollCall
- Gateway communications card for RollCall via RollNet and RS422 control
- Can be used as a semi-portable unit in engineering maintenance applications
- Full CE and UL compliance



IQHSBOXRCAPB Active Front Panel with single PSU and RollCall Gateway Card. 0 module slots

Technical Specification

Active Front Panel Controls (Shoebox)

Dedicated push buttons for

Home; Previous; Return; Modules; Lock; Setup; Save; Recall; Display Select; Menu Text Select; Spinwheel for menu control

Power (Shoebox)

Input voltage range 100 V to 250 V 50/60 Hz
 Input connector IEC320 Fused 1.6 A(T)
 Power switch Located on rear panel
 Power consumption 20 VA maximum

Mechanical (Shoebox)

Temperature range 0 to 40° C operating, -30 to +75° storage
 Humidity range 10 to 85% (non condensing)
 Case type 1U rack mounting steel case
 Dimensions 483mm x 163mm x 44.4mm (w,d,h)
 Weight Approximately 1Kg

IQH

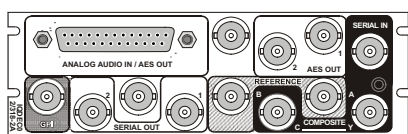
IQ Modular Enclosures, General Information

How do I order the right modules for my enclosure?

Although IQ modules are interchangeable between enclosures, their rear panels are enclosure specific. Code 'A or B' order codes may be used when installing modules in the IQH3B enclosure however, code 'A' order codes must be used when installing modules in the IQH3A and IQH1A enclosures shown below. Non 'A' order codes relate to all other Snell IQ modular enclosures. Please take time to ensure that the compatible order code is selected to match the chosen enclosure.

'B' Style Enclosure

Rear panels with the suffix A or B may only be fitted into the 'B' style enclosure as detailed below:



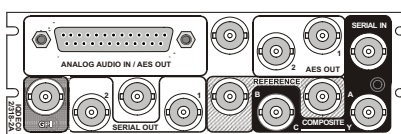
IQDEC0218-2A



IQH3B-S-0, IQH3B-S-P

'A' Style Enclosure

Rear panels with the suffix A may only be fitted into the 'A' style enclosure as detailed below:



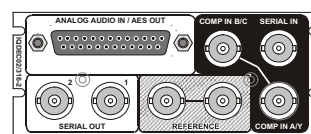
IQDEC0218-2A



IQH3A-S-0, IQH3A-S-P

All Other Enclosures

Rear panels without the suffix A may be fitted into all other Snell IQ Modular enclosures as detailed below:



IQDEC0016-2



IQH1S-RC-0, IQH1S-RC-AP, IQH1U-RC-0, IQH1U-RC-AP, Kudos Plus Products



IQH1A-S-P



IQH3N-0, IQH3N-P



IQH3A-E-0, IQH3A-E-P, IQH3A-0-0, IQH3A-0-P



IQH3U-RC-0, IQH3U-RC-P

Please contact your local sales office to request a copy of **IQ Modular -1 and -2 Style Rear Panels** document for details of available modules.