

Snell  
Academy

# Configuring Centra Router Control and Monitoring Software

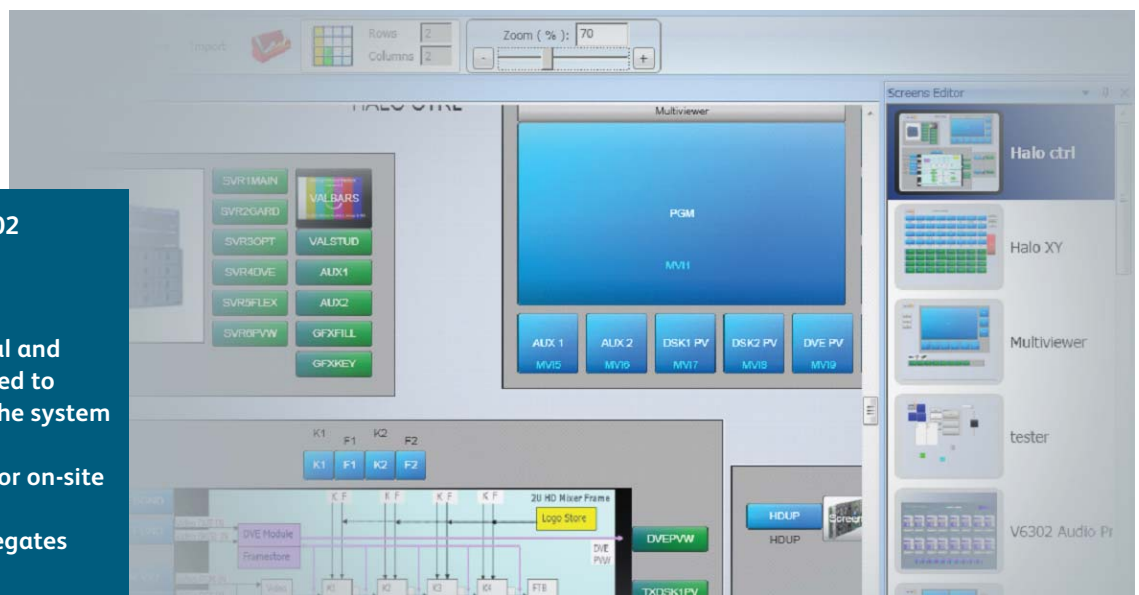
Course Code: SA RCAU 002

Duration: 3 days

Who's it for?: Operational and  
maintenance staff required to  
configure and maintain the system

Location: Snell Academy or on-site

Maximum number: 6 delegates



**Additional Information:** Delegates will receive all related documentation on CDROM or USB, including any relevant software tools, presentations and handbooks.

For courses held at Snell Academy sites, all lunches and refreshments are included.

**Pre-requisites:** Delegates must be familiar with PC's and Windows operating system. In order to tailor the course to your specific installation, we recommend providing Snell with copies of the Nucleus router controller database, SQL database configuration and a control system interconnection sketch.

**Course Outline:** This course covers the set-up, editing, operational and maintenance aspects of Centra Workbench software including the set up and management of hard and soft control panels and rules engine.

**Approach:** The course includes a presentation, live demonstration and hands-on exercises.

**Objectives:** By the end of this course the delegate will be able to:

#### Nucleus configuration

- Describe the Nucleus architecture & terminology that relates to your installation.
- Install Centra Workbench software to edit the Nucleus router controller.
- Configure and maintain the Nucleus controller hardware.
- Describe the key dual Nucleus controller features.
- Configure through Centra Workbench controllers and push configurations to Nucleus and 2330 controllers, edit router names tables, associations, logical to physical real source and destination tables, router port configuration and dual controller options tie lines, inhibits and salvos.
- Configure through the Workbench designer, Nucleus router hard panel templates, assign sources and destinations including entry sequence, relevant panel properties and features be able to access comprehensive system logging.

All Snell Academy courses can be tailored to meet your specific needs. Please contact [snellacademy@snellgroup.com](mailto:snellacademy@snellgroup.com) for more information.



## Snell Academy

### System configuration with soft panel control

- Install and configure server & client locations.
- Configure administration rights, roles, screen permissions, data management and associated licensing.
- Configure and build router control soft panels, assign relevant controller properties, import and export panel layouts within Workbench designer.
- Configure run modes for multiple users and locations.
- Configure and maintain the 2450 Nebula & 2330 Device controller hardware describe the dual controller features (if relevant to your installation).

### MS SQL Express management tool

- Generate new, import and export MS SQL database.

### Centra Workbench Advanced elements

- Configure basic system rules through the rules engine and be able to describe the rules service capabilities and aware of its enormous capabilities.
- Configure basic system mimic architecture diagrams through the design tools and be able to describe the mimic controllers capabilities and features.

## Detailed Agenda:

### Nucleus configuration via Centra

- Nucleus architecture.
- Nucleus controller hardware.
- Nucleus router rear panel layout and connectivity.
- Configuring Nucleus controller IP address.
- Installing Centra software.
- Editing Nucleus router controller.
- Names tables and associations.
- Logical to physical mapping tables.
- Router port configurations.
- Tie lines .
- Inhibits and Salvos.
- Pushing, pulling & archiving of Nucleus Controller configurations.
- Dual 2450 controller configuration.
- Editing Nucleus controller local hard panels.
- 6276 X-Y & 6277 multi-bus.
- 6700 series.
- Logging.

### System configuration

- System architecture.
- Overview of the Device Control & Configuration Protocol (DCCP).
- 2330 controllers hardware.
- Configuring 2330 controller IP address
- Install & configuration of client run mode options.
- Configuring system privileges.

- User/operator system privileges.
- Roles.
- Screen permissions.
- Licensing.
- Pushing, pulling & archiving 2330 device.
- Controller configurations.
- Dual 2330 controller configuration.
- Designer overview: including building simple router control panels and operating these in run mode.
- Rules engine designer overview: including building simple rules and running the rules service.

### System configuration

- Architecture designer overview: including building simple architecture diagram and running screens.
- Review of the 2330 device controller options video playback, alarm service, router device multiviewer device, GPI, panel device.
- Tie-lines, AXON & IQ along with any additional services depending on customer system configuration.
- System logging.

### Additional

- Review generic editor capabilities/features.
- SNMP service.